

## Hosted Remote Management for AirLink Intelligent Devices

AirLink Management Services is an off-the-shelf, hosted application service that enables Sierra Wireless customers to quickly and easily configure and deploy a remote management solution for their ALEOS powered AirLink gateways and routers.

### COMPREHENSIVE DEVICE AND SOLUTIONS MANAGEMENT

AirLink Management Services is a vital tool for any Sierra Wireless customer with multiple AirLink device deployed in the field to monitor remote assets. This hosted platform enables comprehensive remote management for one device or thousands from anywhere with an easy to use web interface. Customers can take advantage of its numerous features, including firmware and configuration updates, signal strength and quality monitoring, scheduled commands, job status, configurable dashboards and the ability to export collected data.

### SIMPLE START-UP AND MAINTENANCE

AirLink Management Services significantly reduces barriers that have traditionally prevented customers from deploying a true remote management solution. By leveraging a cloud computing model, Sierra Wireless has eliminated the need for any software to download and gives the customer a very quick set-up experience. Customers can have their remote management solution set-up and working instantaneously.

AirLink Management Services provide a low-cost way to manage an AirLink M2M deployment on a 24 x 7 basis. The service enables customers to avoid the high up-front IT costs typically associated with comprehensive remote management - servers, software, network infrastructure and operations staff.



### BENEFITS SUMMARY:

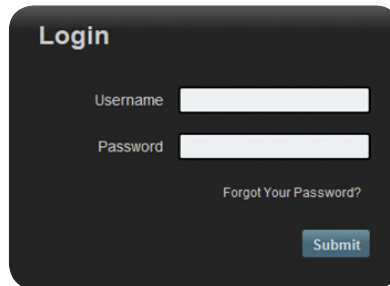
A cloud-based, hosted remote management platform that virtually eliminates the set-up costs and drastically reduces the operational expenses associated with device management.

By leveraging the powerful AirVantage Services Platform from Sierra Wireless, AMS provides a reliable, redundant hosted environment.

Near real-time device status, remote diagnostics and comprehensive remote configuration improves performance and uptime.

## Reliable, Secure Connection

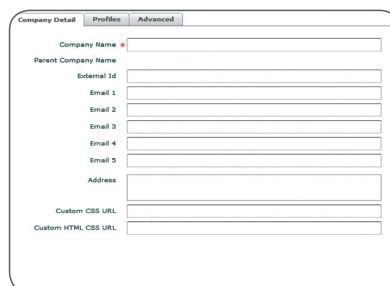
Since, this service is managed and maintained by Sierra Wireless with a high uptime Service Level Agreement, customers can expect a highly reliable solution. Furthermore, the deployment of multiple data centers ensures continuity in the face of natural or man-made failures.



A login form with a dark background. It includes fields for 'Username' and 'Password', a 'Forgot Your Password?' link, and a 'Submit' button.

### SECURE LOGIN PAGE

- Secure ID and Passwords for multiple users
- Ensures data privacy
- Enables a PCI compliant solution

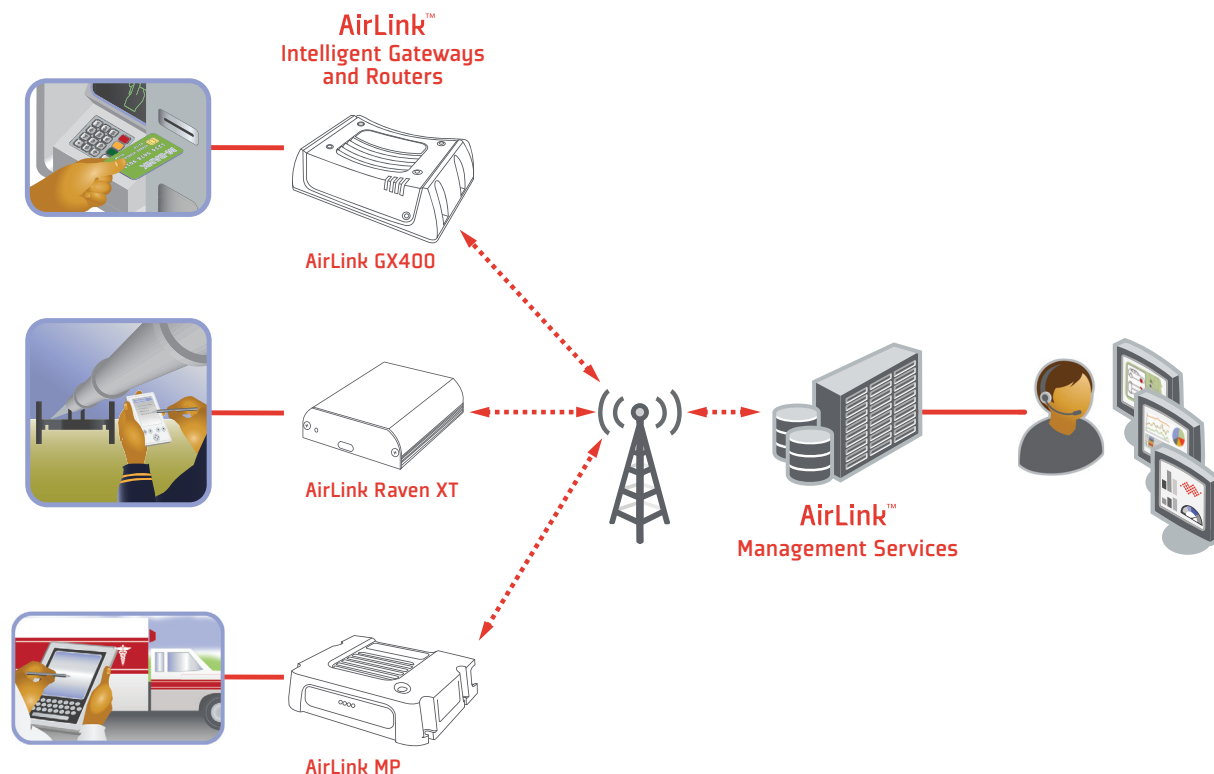


An administration interface with tabs for 'Company Detail', 'Profiles', and 'Advanced'. The 'Company Detail' tab is active, showing fields for 'Company Name', 'Parent Company Name', 'External Id', 'Email 1' through 'Email 5', 'Address', 'Custom CSS URL', and 'Custom HTML CSS URL'.

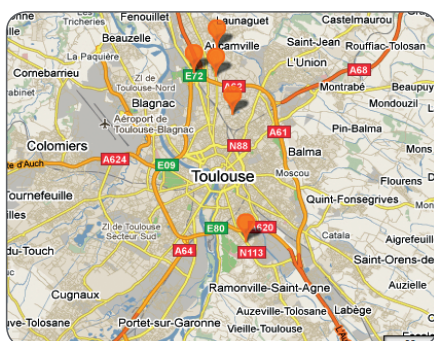
### ADMINISTRATION INTERFACE

- Create and manage users
- Create groups for similar devices and applications
- Simplify job of IT manager with logical groupings

## Complete Device Management for your M2M Application

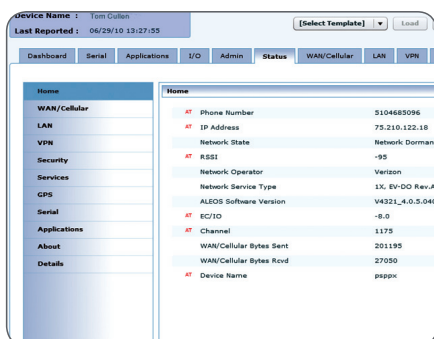


## Intelligence at the End-Point



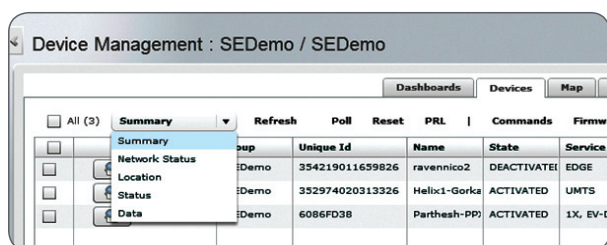
### MAP VIEW

- Worldwide map view of all devices by location
- Set fixed coordinates for non-GPS devices
- Click on device location for detailed information on each device



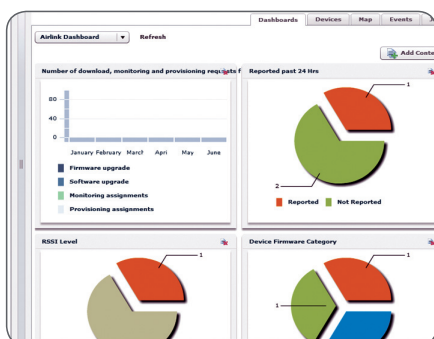
### DEVICE MANAGER

- Comprehensive status of individual device
- Review and control device configuration parameters
- Save and apply templates to other devices
- Based on ACEmanager - no learning curve



### DEVICE LIST

- Allows users to see parameters of all devices
- Multiple view options to meet user or deployment needs
- User can select groups of devices for group actions (FW updates, etc.)



### DASHBOARD VIEW

- User customizable dashboard widgets
- Firmware version distribution for all devices
- Identify missing (off-line) devices
- Easily add and remove dashboards
- Set all devices to local time zone
- Signal strength and quality distribution

AirLink gateways and routers are powered by ALEOS™ embedded intelligence, which makes them highly configurable and simple to deploy. ALEOS manages the cellular connection for an always-on environment, is embedded with a long list of machine protocols, and facilitates the comprehensive remote management made possible with AirLink Management Services. Among the long list of configurable parameters are: FW version; location protocols; events reporting; security; routing and much more.



## Technical Specifications

### PRODUCT FEATURES

- Customized device dashboards
- Web 2.0 browser-based interface
- Device configuration templates
- Device groups
- Multiple user levels
- Device status
- Always-on connection
- User-defined scheduling
- Firmware updates
- Configuration updates

### COMPATIBLE DEVICES

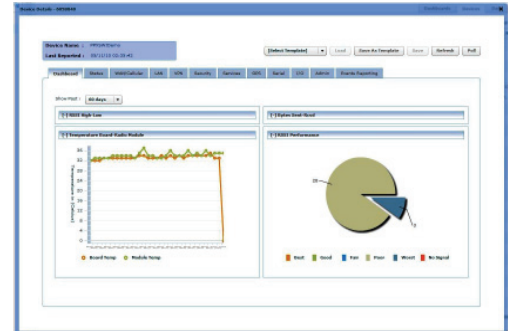
- AirLink GX400
- AirLink Raven series
- AirLink PinPoint series
- AirLink MP series
- AirLink Helix RT

### PRODUCT BENEFITS

- Simple out-of-the-box experience
- Faster startup and zero-install
- Lower total cost-of-ownership
- Lower adoption barrier
- Comprehensive configuration and management
- Flexible and scalable platform
- Efficient delivery model
- More predictable IT operating budget

### SYSTEM REQUIREMENTS

- Compatible AirLink device
- Internet connection
- Web browser



### APPLICATIONS:

- Energy Management
- Industrial Infrastructure
- Retail/POS, Vending/Kiosks
- Business Continuity
- Digital Signage
- Field Service
- Transportation

## How to Buy

AirLink Management Services is an available option for any compatible AirLink device. AMS is available through authorized Sierra Wireless AirLink distributors and resellers.

To locate the most appropriate AirLink product reseller contact us at [AirLinkSales@SierraWireless.com](mailto:AirLinkSales@SierraWireless.com) or visit our website at [www.SierraWireless.com](http://www.SierraWireless.com).



For More Information

**North America & Asia**  
Tel: +1 510 624 4200

**Europe, Middle East & Africa**  
Tel: +33 1 46 29 08 00

**E-mail:**

[AirLinkSales@sierrawireless.com](mailto:AirLinkSales@sierrawireless.com)  
[www.sierrawireless.com](http://www.sierrawireless.com)