

AirLink™ Helix RT

Intelligent, Cellular 3G Router

Simplifies Data Solutions & Eliminates Wireline Dependency

Providing convenient and reliable Internet access, the AirLink™ Helix RT is ideal for fixed and portable applications.

WIRELESS CELLULAR ROUTER

The Helix RT commercial 3G router provides secure broadband communications for data and computing devices in the field or remote locations. The advanced router features a robust broadband routing platform and is equipped with two high-speed Ethernet ports and an optional secure Wi-Fi access point, delivering a single-device solution for extending an enterprise network into the field.

BUSINESS CONTINUITY

The Helix RT router provides managed failover to ensure reliable Internet connectivity. In addition, the onboard VPN client provides an encrypted tunnel from the router to an enterprise network, enabling the Helix RT to be part of a PCI compliant solution.

When used with any Ethernet WAN connection (DSL, satellite, etc), either the Helix RT's Ethernet connection or the onboard 3G modem can be designated as the primary WAN connection. The Helix RT routes traffic through the designated primary WAN and switches to the secondary WAN connection if the primary connection is unavailable. This intelligence ensures data continuity for businesses that rely on real-time transaction processing, security monitoring, or online customer service functions.

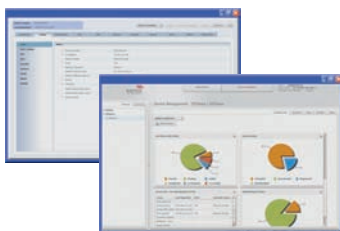
RUGGED INTELLIGENCE

ALEOS™, the long-standing industry benchmark for embedded intelligence, powers AirLink devices, and supports 24/7 always-on availability, persistent connectivity, end-to-end security, real-time two-way data exchange, and remote device management. Designed to meet the needs of industrial M2M, enterprise solutions and mobile applications, ALEOS features embedded machine protocols, routing and location protocols. To ensure reliable, advanced security, ALEOS includes IPsec VPN and GRE tunneling.

REMOTE MANAGEMENT

ALEOS powered devices include the AirLink suite of management tools enabling remote configuration, administration, and control of deployments of any size, from one device to thousands.

Together, ALEOS and the AirLink management tools enable customers to extend their enterprise by managing deployments from a central location, or anywhere with an Internet connection.



KEY BENEFITS:

- Simple to deploy solution to address complex needs
- Full routing capabilities support integration with enterprise networks
- Intelligent WAN failover ensures business continuity
- Hosted remote management lowers cost of ownership
- Robust security protects your data



POWERED BY: ALEOS

SIERRA
WIRELESS™

AirLink™

AirLink™ Helix RT

Intelligent, Cellular 3G Router

Technical Specifications

PRODUCT FEATURES

- Simplified Installation
- Hosted Remote Management
- Automatic Failover
- Robust Security
- Reliable Connection
- Multiple Connection Ports
- ALEOS Embedded Intelligence
- Durable Design
- Optional 802.11g Wi-Fi
- 3 Year Warranty

SECURITY

- Onboard IPsec VPN Client
- VPN Pass-Through (ESP, AH protocols)
- GRE Tunneling
- WPA2 Enterprise Wi-Fi Encryption
- Stateful Packet Inspection Firewall
- MAC Address Filtering

TECHNOLOGY

- HSPA with fallback to: HSDPA, UMTS, EDGE, GPRS
- or
- EV-DO Rev. A with fallback to: CDMA EV-DO (Rev. 0), CDMA 1xRTT

BANDS

- Tri-Band UMTS/HSDPA/HSPA 850, 1900, 2100 MHz
- Quad-Band GPRS/EDGE 850, 900, 1800, 1900 MHz
- or
- Dual Band EV-DO Rev. A 800, 1900 MHz

ENVIRONMENTAL

- Operating Temperature: 0° to +50°C / 32°F to +122°F
- Storage Temperature: -40°C to +80°C / -40°F to +176°F

DIMENSIONS

- 159 mm x 35 mm x 180 mm
6.3 in x 1.4 in x 7.1 in
- 870 grams
31 oz

STANDARDS/APPROVALS

- FCC
- Industry Canada
- Carrier Specific Approvals
- RoHS Compliant
- PTCRB
- CE

HOST INTERFACES

- Dedicated Ethernet LAN
- Configurable Ethernet WAN/LAN
- 2 Host USB Ports (Type A)
- Serial DB-9
- Antenna Connections:
 - 2 Cellular - 50 Ohm SMA
 - 2 Wi-Fi - 50 Ohm SMA (Optional)

APPLICATION INTERFACES

- TCP/IP, UDP/IP, DHCP, HTTP, SNMP

LED INDICATORS

- WAN and 3G Status
- Modem Status
- Signal Strength
- Ethernet Status



APPLICATIONS:

- Primary and Backup Connection
- Temporary Offices
- Secure Retail Transactions
- Digital Signage
- Surveillance
- Disaster Recovery

